

# APPLESEEDS

March, 2025    Volume 34, Issue 6



## MARCH MEETING

The Member Meeting is  
**TUESDAY, MARCH 4, 2025**  
Mizpah Shrine Center  
1015 Memorial Way, Fort Wayne,  
IN 46805  
**NO MEETING**  
**GARAGE SALE!!**  
**6:30 PM TO 8:30PM**

### IN THIS ISSUE

Presidents Letter	2
Condoleces	2
Programs	3&4
Education/Outreach	5
Monthly Mini	5
BOM	6
Membership	7
Bee Keeper Update	7
Guild Challenge	8
FWQF	9-11
And in other news	12
Officers and Committee	
Chairs	13
Non Board Positions	14
General Guild Info	15

### BOARD MEETING

Tuesday, March 11, 2025  
Alan McMahan Room  
Allen County Public Library  
Main  
6:00pm

#### CANCELLATIONS

Guild meetings are cancelled for inclement weather when Ft Wayne community Schools closes for in-school classes (e-learning days) on our meeting date. Also check local news stations and our website for meeting cancellations

### QUICK REFERENCE DATES

Quilt Retreat: Mar. 13 - 16, 2025  
Workshop: April 1, 2025  
Workshop: May 6, 2025  
Workshop : August 5, 2025  
Quilt Fest: Sept. 26-27, 2025  
Fall Festival: October 11, 2025  
Workshop: Nov. 4, 2025

## FROM THE PRESIDENT

February - in reality it's the shortest month of the year, but, to me, it often feels like the longest month of the year because the cold air and grey skies seem never-ending. I've come to believe that I have SAD - Seasonal Affective Disorder. This is a condition in which a person's mood is negatively impacted by the gloomy weather. In order to avoid total depression I am focusing on positives in my life - beautiful quilt patterns and fabrics, participation in bees, and love of family and friends. Also, the knowledge that the Home and Garden Show and the start of March are just around the corner, is helping to keep my mood more positive. Hang in there everyone - Spring IS coming!

Now, a little guild business. At the Board meeting we discussed the free table and decided that it's time to review the rules because the table is starting to get a little chaotic again.

- All fabric needs to be in clear plastic bags, which have the donating person's initials written on them.
- When you take a bag of fabric, take the entire bag, don't pick and choose. You can always bring back unwanted fabric at another time.
- Other quilting-related items are also appropriate. Just make sure anything sharp is well-contained so it's not hazardous to folks fingers.
- Remember to take donated items home when you leave the meeting if they are still on the table.

Thank you all for everything you do to make AQG such a wonderful organization!

Patty Davis

## CONDOLENCES

We wish to offer condolences to the family and friends of Marcia Brindle, who passed away on February 13, 2025. Marcia was a member of our guild for more than twenty years. She shared her talents with us in so many ways over the years as well as being a friend to many of us. She was most recently a member of the Art Bee. Marcia designed and constructed our raffle quilt for the 2023 Quilt Fest. Her obituary, found at [DignityMemorial.com](https://www.dignitymemorial.com), does not state a date for calling on her family or list a scheduled funeral.

Marcia will be missed.

## March 4, 2025

The **Garage Sale** is happening in March! **Bring cash or checks for your purchases.** There will be 15 tables full of good bargains. Come to shop and bring your friends. This garage sale is open to the public. The board will also have a table if you would like to donate items there. Proceeds from the Board Table go to the Guild. **You will also have an opportunity at the garage sale to register for the April and the May Workshops.** There will be no other guild tables set up at this meeting and no business meeting.

## April 1, 2025

**Tara Miller of The Quilt District** will be our instructor for a workshop called Legacy Wheel and an evening lecture on The Magic of Mixing Prints. Tara has had her work featured in Quiltmania and Simply Moderne and was recently spotlighted in Issue 30 of Quiltfolk magazine. The supply list and sign up will be available starting at the January meeting. The workshop will be held from 10am to 4pm at Shriner's on April 1, 2025. The member cost is \$50.



Legacy Wheel  
Block Sample



Legacy Wheel

## May 6, 2025

Make a custom quilt coat with **Jaymi of the Cranky Kangaroo**. There will be high demand for this workshop, so sign up early. We would love to offer two days of workshops if we have the demand. Sign up begins in January. See an example of a vintage quilt coat at the Programs table. You can use a quilt of your choice or bring 4-5 yards of quilted fabric. Check out Cranky Kangaroo's website, <https://www.crankykangaroo.com/>, for ideas. Jaymi will be our lecturer in the evening. The Workshop is on May 6, 2025 at Shriners from 10am to 4 pm. Member cost is \$70.



Quilt Coat made from  
quilted whole cloth



Quilt Coat made  
from a quilt

# PROGRAMS

page 2 of 2

## **June 4, 2025**

Come see all the beautiful and creative challenge quilts made by our members. Also learn what the instructors are planning to teach at the October 11th Fall Festival. They will bring samples of what you can make in their classes.

## **July 1, 2025**

Alice Ridge will be teaching us to not fear the curves during this curved piecing workshop. The evening trunk show, *Going In Circles*, is all about curved piecing. <https://aliceridgequilts.com/>

## **August 5, 2025**

We are so thrilled to have Leanne McGiveron of Sumac Studios provide us an evening lecture about *Quilt Your Adventure*. This will inspire you to make your own quilt based on your travel experiences. Our very own Tammy Miller will be teaching a landscape workshop during the day. More details to follow.

## **September 2, 2025**

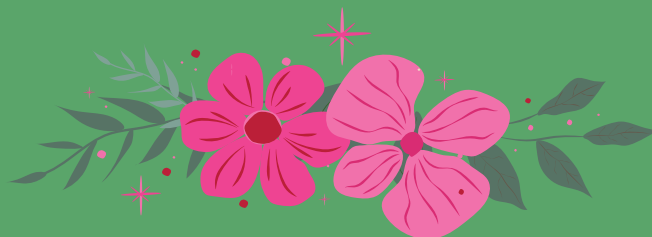
September is an exciting month as the Fort Wayne Quilt Fest is September 26 and 27. Check out [fwquiltfest.com](http://fwquiltfest.com) for more details. This evening we will have a presentation about the quilt show and you will have opportunities to volunteer.

## **October 7, 2025**

TBD

## **November 4, 2025**

Sally Terry Designs will be giving a workshop and evening lecture. This workshop, *Modern Quilts & Machine Quilting Designs*, will appeal to so many of us and all skill levels. You will have fun exploring and stitching newly designed patterns using the decorative stitches on your machine. Get planning strategies for modern quilts with contrasting colors, non-gridded geometric shapes and large open areas. The evening lecture is *Running Threads*. Watch and learn how to run Specialty Threads in your machine and how to control the other many pesky threads you already have on hand that are refusing to cooperate. Sally will pass around over 15 threads so you can handle them. Sally will explore their characteristics, learning how to adjust your bobbin tension and top tension for running on your own machine. Extensive PowerPoint Presentation and handout.



## EDUCATION/OUTREACH

Hello My Quilting Friends!

Another reminder the first UFO finish is scheduled to be due at the March meeting and the yard sale at March meeting will be very exciting and busy. So bring your finished UFO to the April meeting instead for show and tell.

I have great news for Fall Festival which will be October 11, 2025. We have some great classes lined up already. Traditional piecing, improvisational piecing, wool applique, a cross body tote.

If you have any ideas or suggestions for future educational programs, please stop by my table at a meeting and give me your ideas.

The BOM, Attic Window, that was distributed last month can be found on the next page. You can bring your complete blocks to the April meeting.

Sybil Magrill

education@appleseedquiltersguild.com

## MONTHLY MINI

Hello Appleseeders,

Welcome to the March edition of our newsletter. As stated before, there is no mini this month in lieu of the Garage Sale. Hit those piggy banks - there are bargains to consider!

In February we had our first 50/50 Drawing at the Monthly Mini table. It was a good success so there will be more in the future. It brought in a total of \$88. Forty four dollars went to the guild and \$44 to the winner of the drawing.

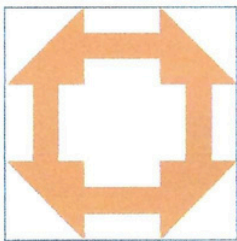
The Monthly Mini for April will be a **gift certificate from Edwards for fifty dollars**. This must be used all at once for a one time purchase. It can only be used for full price fabric at Edwards with no credit carried forward.

So bring your pennies and dollars for the Garage Sale. It should be fun again. This will be my second one. Also do not forget about the retreat for next month.

Sincerely

Michael Voiles

Nancy Compton



## Appleseed BOM

### Attic Window

#### White:

2 – 4 inch squares

2 - 1 ½ x 14 ¼ inch rectangles

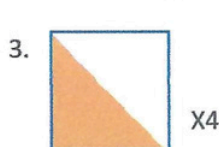
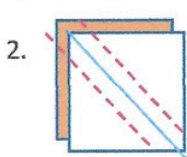
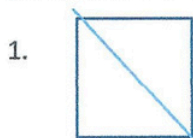
1 – 3 ½ inch square

#### Orange:

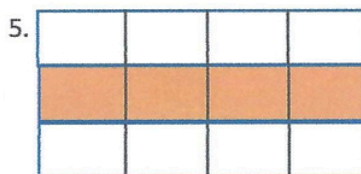
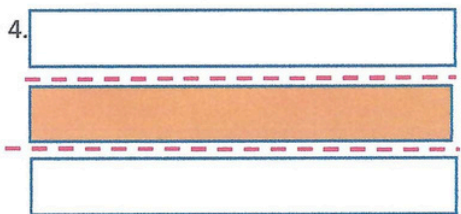
2 – 4 inch Squares

1 – 1 ½ x 14 ¼ inch rectangle

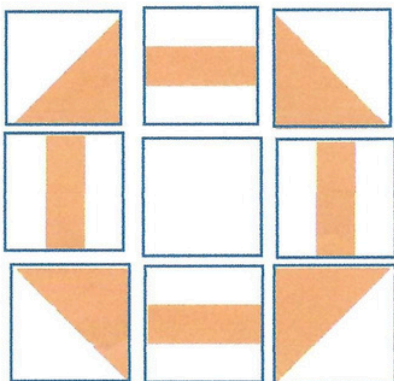
1. Draw a diagonal line from corner to corner of each of the 4 inch white squares. 2. Match the white 4 inch square with a Orange 4 inch square, right sides together. Sew ¼ inch away from each side of the drawn line. Cut along the drawn line and you will have two half square triangles. Press to the Orange, and trim down to 3 ½ inches. 3. This will give you two white/Orange half square triangles. 4. Repeat one time for a total of 4 white/Orange HST's.



4. Sew a White 2 x 14 ¼ inch rectangle to Green 2 x 14 ¼ inch rectangle along the long edge. This will result in a 3 ½ white/green unit. Press to the green 5. Subcut into (4) 3 ½ x 3 ½ inch squares. 6. You will have 4 white/green squares.



Arrange the pieces and sew together as seen below. Your finished block will measure 9 ½ inches.



If you have any questions call  
Sybil Magrill @ 910-478-5444

# BEE KEEPER UPDATE

I am excited to announce that three of our bees have found a new hive in which to complete their work and enjoy each other's company. The following bees are now meeting at:

The Pepple's Barn  
13220 Puff Road  
Fort Wayne, IN 46845

## MINITURES BEE

1PM-5PM

Coordinators:

Jan Evard and

Lynn Gerig

## MODERN MONDAY

9AM to 5PM

Coordinator:

Patty Davis

## ONE BLOCK WONDER BEE

9AM to 1PM

Coordinator:

Tammy Miller

**They all meet on the 2nd and 4th Monday of the month.**

They all meet on the 2nd and 4th Monday of the month. If you have any questions or wish to join one of these bees, please contact the coordinators listed above. (Please refer to our Guild Directory for contact information as we do not publish phone numbers in the newsletter.) Our bees provide a wonderful opportunity to get to know other quilters from our guild and share ideas. I hope you will consider either joining an existing bee or starting a new bee that interests you. I am available and excited to discuss either option with you.

Lynn Gerig,

Bee Keeper

[beekeeper@appleseedquiltersguild.com](mailto:beekeeper@appleseedquiltersguild.com)

# MEMBERSHIP

We are happy to have Vickie Sitz returning with her daughter, Molly (Mary). Welcome also to our new members Dee Conn and Susan Ryan. Our Guild now includes 129 creative individuals.

The month of March marks our half-way point for membership and so our dues are reduced to half, or \$15. The perfect opportunity for anyone you know who couldn't make a full year commitment.

## DUES

Our membership year begins October 1, 2025. It's not too early for us to consider our budget for next year. As you know, our dues are currently \$30. We need to consider a slight, \$5, increase for next year. This is what the Board is proposing. We will be discussing and voting at a meeting soon.

Linda Wojewuczki

Membership

# GUILD CHALLENGE

## PANEL PALOOZA GUILD CHALLENGE

Our new challenge is called Panel Palooza. Use a panel to make a NEW quilt. The purpose of the challenge is to be creative and try something new! Panels are a great way to create a theme and make a quick quilt, but it can also be fun to try something interesting and different.

You can make as many quilts as you want for this challenge and each one can earn tickets for the prize drawing at the June 2nd reveal program. For each element listed below, that is included in your quilt, you can earn a ticket:

1. use a panel
2. add borders
3. include piecing:, such as 9-patch, flying geese, piano keys, etc.
4. cut up the panel and use it in an interesting way
5. embellish: beads, yarn, thread painting, paint, etc.
6. be creative with the back

Have fun! We will have a special display at Quilt Fest for Panel Palooza quilts as well as our previous Color Challenge quilts.

Questions or comments? See me at the guild meetings or email me at:

[challenge@appleseedquiltersguild.com](mailto:challenge@appleseedquiltersguild.com)

Tammy Miller





We have such a great team working on our next Quilt Show! With just over 6 months to go, we have been working hard to make our show even better than last time!

New for this year.:

- Silent Auction of fabric bundles, patterns, kits and much more!
- Demonstrations on the Stage
- Free Parking
- Food available on-site

To keep things running smoothly, we need your help. Open Chair positions:

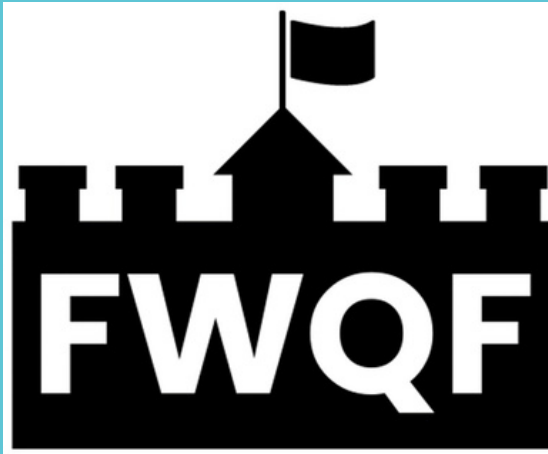
- Signs - Does not need to attend the Show meetings but is welcome to attend
- Stage Coordinator - Assigns time slots to Vendor Demonstrations, Member Trunk Shows etc.

As a show chairperson, you do not need to do all the work, you can assign jobs to other volunteers. Please consider sharing a bit of your time and talent. This is our guild's main fundraiser thus allowing us to have such wonderful programs. Help us support our Guild.

Sue Traxler

[FWQFChair@appleseedquiltersguild.com](mailto:FWQFChair@appleseedquiltersguild.com)





## JUDGED CATEGORIES

### Appliqué

The quilt top must be 50% or more appliqué. The perimeter must measure a minimum of 145".

### Pieced, Large

The quilt top must be 50% or more pieced. The perimeter must measure greater than 325".

### Pieced, Small

The quilt top must be 50% or more pieced. The perimeter must measure between 145" and 325".

### Wall Hanging

Quilts must be intended for display on a wall. These quilts may be any technique – pieced, appliquéd, wholecloth, crazy quilt, painted, etc. The perimeter must measure less than 200".

### Art, Original Design

No commercial pattern or pattern designed by anyone other than the entrant is acceptable. Art quilts may be any technique - pieced, appliquéd, painted, etc. There are no size limitations.

### Modern, Large

Quilt may feature high contrasting colors, minimalism, geometric shapes, improvisational piecing, expansive negative space and non-traditional layouts. The perimeter must measure greater than 200".

### Modern, Small

Quilt may feature high contrasting colors, minimalism, geometric shapes, improvisational piecing, expansive negative space and non-traditional layouts. The perimeter must measure less than 200".

### Take Flight

The theme of this category can be interpreted in a variety of ways: aviation, birds, butterflies, kites, balloons, or anything else which clearly portrays this theme. Quilts can be any size or technique.

### Young Quilters

Quilt made by quilters age 18 or younger. Quilt can be any size or technique and can be quilted or tied. Only ribbons will be awarded. (Quilts entered in this category need to fill out a **Special Exhibit Entry Form**, NOT a Judge Quilt Entry Form.)



## JUDGING FORM (FYI)

**Quilt Judging/Comment Sheet**

Entry # \_\_\_\_\_ Category \_\_\_\_\_ Title \_\_\_\_\_

Award: 1 2 3 HM Special Award/Hold \_\_\_\_\_

E = Excellent VG = Very Good G = Good S = Satisfactory NI =  
Needs Improvement N/A = Not Applicable

\*\*\*\*\*

**DESIGN & GENERAL APPEARANCE**

\_\_\_\_\_ Overall Appearance / Visual Impact / Condition of Quilt

\_\_\_\_\_ Use of Color & Fabric

\_\_\_\_\_ Layout & Balance

\_\_\_\_\_ Creativity & Innovation

\_\_\_\_\_ Quilting Designs Enhance & Complement Top Construction

**WORKMANSHIP**

\_\_\_\_\_ Piecing (precision, seams lie smooth and flat, no shadow-through, thread color blends)

\_\_\_\_\_ Applique\* (sharp points, smooth curves, stitching appropriate for piece)

\_\_\_\_\_ Special Techniques (embroidery, beading, embellishments)

\_\_\_\_\_ Sashing, Borders, & Edges (straight lines are straight, long seams are smooth)

\_\_\_\_\_ Quilting (sufficient throughout, precise stitches, markings removed, no distortions)

\_\_\_\_\_ Finishing (binding, corners, backing, other edge treatments)

**COMMENTS:**

## AND IN OTHER NEWS.....



**32<sup>ND</sup> ANNUAL**  
**Indiana Heritage Quilt Show**  
**March 6-8, 2025**  
 Monroe Convention Center | Bloomington, IN

---

**\$10,000** in prize money • Over 200 unique quilts • Vendors on site

**INSTRUCTORS:** Kathy Dunigan, Linda Hahn, Tara Miller, Catherine Redford, Cindy Seitz-Krug, Karen K Stone

**FEATURED ARTIST:** Sue Cortese, SueCorteseQuilt.com

**SPECIAL SHOW EXHIBIT:** Sacred Threads: Expressing Life's Journey's. Quilt exploring themes of joy, spirituality, peace/brotherhood, inspiration, grief, or healing.

**SAQA TRUNK SHOW:** Art quilts showing a variety of techniques from artists worldwide.

**CHALLENGE QUILT:** Birthstone. Use a birthstone color as the major color in your quilt.

---

Enter a quilt or register for a workshop at [WWW.IHQS.ORG](http://WWW.IHQS.ORG)   



Quilt Show 2025  
 48th Annual Sauder Village Quilt Show  
 Wednesday April 30 – Saturday, May 3, 2025, 10:00 a.m. – 5:00 p.m.  
 Founder's Hall

Celebrate the time-honored tradition of quilting during this four-day regional exhibit! See your quilt on full-length display at Sauder Village and participate in our NACQJ-judged competition. Art quilts, traditional quilts, and everything in between has a place in Founder's Hall. Visit the website at [saudervillage.org](http://saudervillage.org). Click on the events tab.



Mark your calendar for 2025...

**One Stop Quilt Shop Hop**  
 Friday July 18th & Saturday July 19th  
 HONEYWELL CENTER ~ Wabash, IN

For more info...  
 visit our FACEBOOK PAGE:  
 "the original One Stop Quilt Shop Hop"

**WEBSITE:** [www.nancyjsfabrics.com/quilt-shop-hop.htm](http://www.nancyjsfabrics.com/quilt-shop-hop.htm)  
 or  
**PHONE:** 260-563-3505

*Shop Till You Drop!*



Join Us for Our First Shop Hop Across the state of

**Indiana**  
**MAY AND JUNE 2025**

---

Over **50** Stores, **100s** of Prizes, **Free** Gift at Every Store

Visit [www.IndianaShopHop.com](http://www.IndianaShopHop.com) and join our Facebook Group: [www.facebook.com/groups/allindianashophop](https://www.facebook.com/groups/allindianashophop) to learn all about it.

The All Indiana Shop Hop Magazine will go on sale Mid-March 2025 at all participating stores.

It's your passport to embark on the Great Sewing Adventure™ across Indiana!

**ALL INDIANA SHOP HOP**



**The Quilters**  
**HALL OF FAME**

**Celebration**  
**July 17-19, 2025**

featuring the induction of:  
**Laurel McKay Horton**

The Quilters Hall of Fame is proud to announce Laurel McKay Horton as its 2025 honoree. A distinguished quilt scholar, researcher, author, editor, lecturer, consultant, and teacher, Horton has made significant contributions that have shaped the world of quilting in research, publications, museums, and preservation. Horton's impressive career includes ten years as editor of "Uncoverings," the American Quilt Study Group's prestigious annual publication. Her editorial leadership was marked by generosity, expertise, and a commitment to nurturing authors while upholding the highest standards of research and reporting. Internationally recognized, Horton's research and publications in England have been instrumental in helping British quilt historians develop their national narrative. Her passion for teaching and enthusiasm for the subject have inspired countless individuals, instilling a deeper appreciation for historic quilts.



# 2024 - 2025 BOARD MEMBERS

## EXECUTIVE BOARD

PRESIDENT

PATTY DAVIS

[president@appleseedquiltersguild.com](mailto:president@appleseedquiltersguild.com)

VICE PRESIDENT

LAURA JACKSON

[vicepresident@appleseedquiltersguild.com](mailto:vicepresident@appleseedquiltersguild.com)

TREASURER

MARLENE SLOAT

[treasurer@appleseedquiltersguild.com](mailto:treasurer@appleseedquiltersguild.com)

RECORDING SECRETARY

LYNN GERIG

[secretary@appleseedquiltersguild.com](mailto:secretary@appleseedquiltersguild.com)

ADVISOR

GEORGI SCHNEIDER

[advisor@appleseedquiltersguild.com](mailto:advisor@appleseedquiltersguild.com)

PARLIAMENTARIAN

BEV GUNN

[parliamentarian@appleseedquiltersguild.com](mailto:parliamentarian@appleseedquiltersguild.com)

## BOARD MEMBERS STANDING COMMITTEES

COMMUNICATIONS

MICKIE HEATH

[communications@appleseedquiltersguild.com](mailto:communications@appleseedquiltersguild.com)

GUILD SERVICES

TAMMY MILLER

[guildservices@appleseedquiltersguild.com](mailto:guildservices@appleseedquiltersguild.com)

MEMBERSHIP

LINDA WOJEWUCZKI

[membership@appleseedquiltersguild.com](mailto:membership@appleseedquiltersguild.com)

PHILANTHROPY

JO SCOROF

[philanthropy@appleseedquiltersguild.com](mailto:philanthropy@appleseedquiltersguild.com)

TECHNOLOGY

BILL SCHNEIDER

[technology@appleseedquiltersguild.com](mailto:technology@appleseedquiltersguild.com)

PROGRAMS

JEAN KASTE

[programs@appleseedquiltersguild.com](mailto:programs@appleseedquiltersguild.com)

QUILT SHOW

SUE TRAXLER

[fwqfchair@appleseedquiltersguild.com](mailto:fwqfchair@appleseedquiltersguild.com)

EDUCATION/OUTREACH

SYBIL MAGRILL

[education@appleseedquiltersguild.com](mailto:education@appleseedquiltersguild.com)

**BOX COLORS  
CORRESPOND WITH  
STANDING COMMITTEE  
CHAIRS ABOVE**

**NON BOARD MEMBERS  
HOLDING POSITIONS**

NEWSLETTER EDITOR  
LAURAJACKSON  
[newsletter@appleseedquiltersguild.com](mailto:newsletter@appleseedquiltersguild.com)

DIGITAL COORESPONDENT  
MICKIE HEATH  
[info@appleseedquiltersguild.com](mailto:info@appleseedquiltersguild.com)

POSTAL CORESPONDENT  
LINDA MULPAGANO  
[postalservices@appleseedquiltersguild.com](mailto:postalservices@appleseedquiltersguild.com)

SOCIAL MEDIA  
KIM KASTE  
[socialmedia@appleseedquiltersguild.com](mailto:socialmedia@appleseedquiltersguild.com)

PUBLICICIY  
GEORGI SCHNEIDER

ATTENDANCE  
LINDA WOJEWUCZKI, BECKY BENNET, CAROLYN  
PAVELEC, GINNY HOOT  
[membership@appleseedquiltersguild.com](mailto:membership@appleseedquiltersguild.com)

GREETER  
GEORGI SCHNEIDER  
[membership@appleseedquiltersguild.com](mailto:membership@appleseedquiltersguild.com)

DIRECTORY  
MELINDA COY  
[directory@appleseedquiltersguild.com](mailto:directory@appleseedquiltersguild.com)

HOSPITALITY/DOOR PRIZES  
LINDA WOJEWUCZKI  
[membership@appleseedquiltersguild.com](mailto:membership@appleseedquiltersguild.com)

WEBMASTER  
BILL SCHNEIDER  
[webmaster@appleseedquiltersguild.com](mailto:webmaster@appleseedquiltersguild.com)

TECHNOLOGY SUPPORT  
PAM OWENS  
[support@appleseedquiltersguild.com](mailto:support@appleseedquiltersguild.com)

BEEKEEPER  
LYNN GERIG  
[beekeeper@appleseedquiltersguild.com](mailto:beekeeper@appleseedquiltersguild.com)

MONTHLY MINI  
MIKE VOILES and NANCY COMPTON  
[monthlymini@appleseedquiltersguild.com](mailto:monthlymini@appleseedquiltersguild.com)

CHALLENGE COORDINATOR  
TAMMY MILLER  
[challenge@appleseedquiltersguild.com](mailto:challenge@appleseedquiltersguild.com)

ACCUQUILT COORDINATOR  
SYBIL MAGRILL, KIM KASTE  
[library@appleseedquiltersguild.com](mailto:library@appleseedquiltersguild.com)

GUILD RETREAT  
GEORGI SCHNEIDER  
[retreat@appleseedquiltersguild.com](mailto:retreat@appleseedquiltersguild.com)

TOUCH QUILTS  
MARVENE KELTY

DOG BEDS  
ANNE TINKEL

KIDS QUILTS  
MARGARET DANNENFELSER

PROGRAMS COMMITTEE  
JEAN KASTE, JENNIFER HOPE,  
NANCY GEILING, AND ANGIE KECK  
[programs@appleseedquiltersguild.com](mailto:programs@appleseedquiltersguild.com)

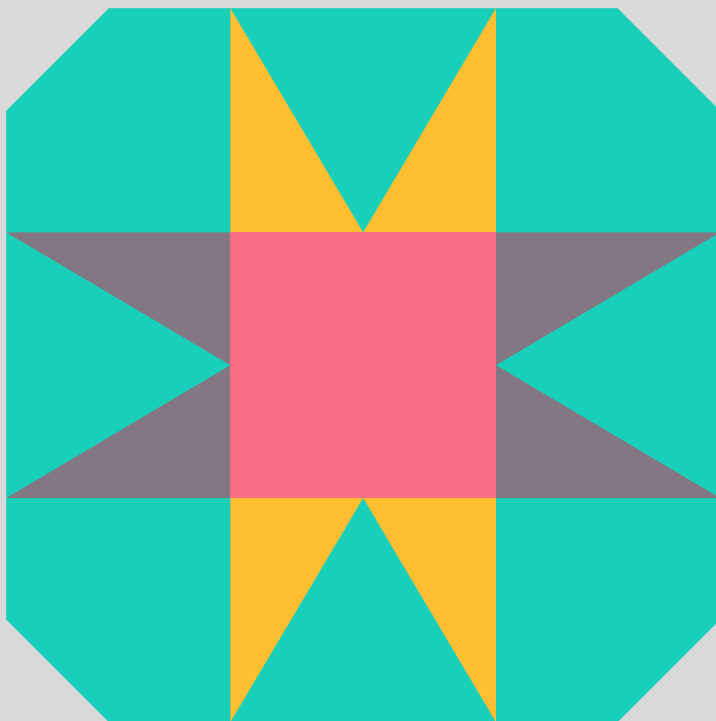
SEEDLINGS  
NANCY TIPPMMANN

APPLE ORCHARD  
VACANT

RAISE RIGHT SCRIP  
SUSAN BENESH  
[raiseright@appleseedquiltersguild.com](mailto:raiseright@appleseedquiltersguild.com)

## GENERAL GUILD INFORMATION

- Please sign in when you arrive at the monthly guild meeting!
- Our membership year begins October 1st annually with your membership card good through September 31st of the following year. Dues are \$30 per year; if a non-member joins between April 1st and September 31st, dues are reduced by 50%.
- Checks for dues can be mailed to: Appleseed Quilters Guild – PO BOX 10484 – Fort Wayne, IN 46852-0484
- ADVERTISEMENTS TO SELL ITEMS IN THE NEWSLETTER are to be sent to the Newsletter Editor at [newsletter@appleseedquiltersguild.com](mailto:newsletter@appleseedquiltersguild.com) or mailed to: PO Box 10484, Fort Wayne, IN 46852-0484. The cost for any size ad is \$10 for a one-month listing. The cost is currently waived for members. A check payment should be made out to AQQ, and mailed to AQQ, PO Box 10484, Ft Wayne, IN 46852-0484 by the third Tuesday of the month to appear in the next newsletter. The size of the ad is at the discretion of the editor.
- Website: [www.appleseedquiltersguild.com](http://www.appleseedquiltersguild.com)



MAIL US AT:  
 PO BOX 10484 FORT WAYNE, IN  
 46852-0484  
 Visit our website at:  
[www.appleseedquiltersguild.com](http://www.appleseedquiltersguild.com)  
 Email us at:  
[INFO@APPLESEEDQUILTERSGUILD.COM](mailto:INFO@APPLESEEDQUILTERSGUILD.COM)

Information published in the Appleseed Guild Newsletter will comply with the latest guidelines offered by the HIPAA Privacy Rule. Primarily information published will be based on the individual's written authorization of information published.